

AutoMap

AutoMap, LLC is an intelligent machines Pittsburgh with core competence in artificial intelligence and robotics.

With the introduction of our platform, Veritas, we aim to set the world standard for metrically accurate, real world assessments of component, feature and vehicle performance.



VERITAS

Enables engineers to assess vehicle performance and correct defects throughout its life cycle.



TRACTION

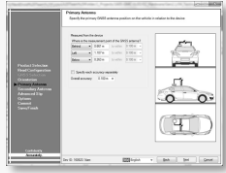
It's a uniquely hard problem, but we have recruited a world-class team and already delivered to global leaders.



Result of years working with test engineers who needed better tools for diagnostics



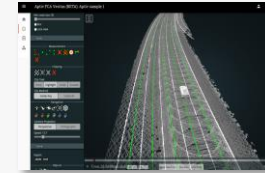
'GOLD STANDARD' SENSORS
Bolt-on, pre-calibrated, with consistent set of measurements



CONNECTED CAR ELEMENTS

Quantification of sensor accuracy, AV feature performance, comparing world truth to world model

03



SCALABLE PROCESSING (CLOUD)

Centralized data management, convenient web-based access to tools, with highly automated post-processing

04

EMBEDDED DOMAIN EXPERTISE

Decades of experience developing full stack robotic solutions in multiple domains, applied to validation

01

TEST DEVELOPMENT SCRIPTS

Test development procedures, test planning, long term performance, monitoring & planning of multiple assets

05

GROUND-TRUTH & ACQUIRE DATA



Installation in less than a day



Scalable Analysis Tool Suite

PLAN, ANALYZE & STORE DATA

Automated Full Assessments

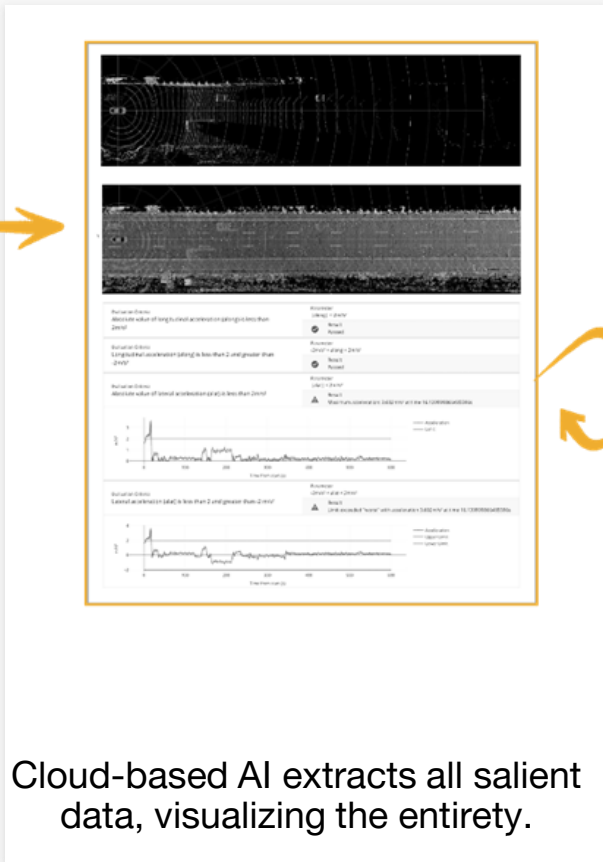
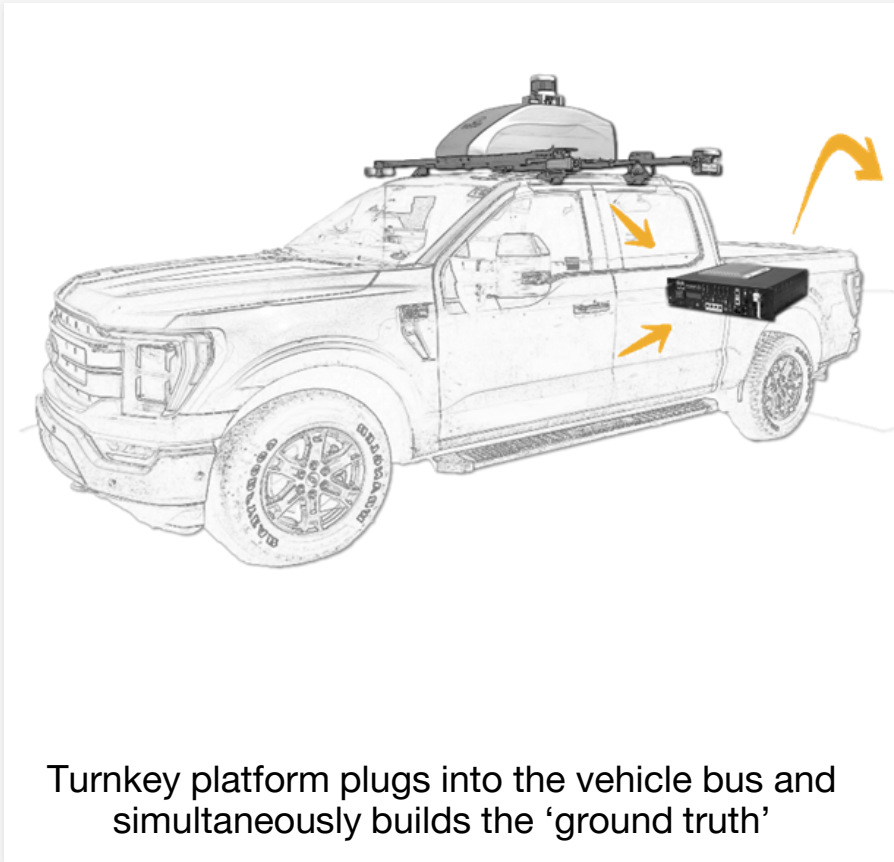


Data Visualizer and Evaluator



► SOLUTION SUITE

Using real world data, machine learning and cloud processing, we solve the problem with unprecedented accuracy– 10x faster than any alternative and cost-effectively.



State of the Art ‘Edge Computing’ with wide assortment of interfaces.



Ethernet based switching with precise time synchronization – GrandMaster or slave
100 Gb/s recording and writing

ELEMENT	METRIC										
INTERFACES (FRONT) 50+ I/O DEVICE(S)	<table border="0"> <tr> <td>14 X 1000BASE-T ETHERNET (GPTP)</td> <td>4 X 10G ETHERNET CU</td> </tr> <tr> <td>10 X 1000BASE-T ETHERNET</td> <td>6 X CAN FD</td> </tr> <tr> <td>5 X 100BASE-T1 ETHERNET</td> <td>4 X USB 3.0 HOST</td> </tr> <tr> <td>1 X 1000BASE-T1 ETHERNET</td> <td>ADD'L AVAILABLE UPON REQUEST</td> </tr> <tr> <td>8 X 10G ETHERNET FIBER</td> <td></td> </tr> </table>	14 X 1000BASE-T ETHERNET (GPTP)	4 X 10G ETHERNET CU	10 X 1000BASE-T ETHERNET	6 X CAN FD	5 X 100BASE-T1 ETHERNET	4 X USB 3.0 HOST	1 X 1000BASE-T1 ETHERNET	ADD'L AVAILABLE UPON REQUEST	8 X 10G ETHERNET FIBER	
14 X 1000BASE-T ETHERNET (GPTP)	4 X 10G ETHERNET CU										
10 X 1000BASE-T ETHERNET	6 X CAN FD										
5 X 100BASE-T1 ETHERNET	4 X USB 3.0 HOST										
1 X 1000BASE-T1 ETHERNET	ADD'L AVAILABLE UPON REQUEST										
8 X 10G ETHERNET FIBER											
DATA STORAGE	HOT-SWAP, EASY TO CHANGE, HIGH PERFORMANCE CARTRIDGE (64 TB)										
OPERATIONS	NOMINAL: DC 12 V, CRANK SAFE TEMPERATURE RANGE: 0°C TO 50°C										
DIMENSIONS	ENVELOPE: 19" X 22" X 8.75" WEIGHT: 35 LBS										
DATA RECORDING	100 Gb/s, CAN REACH 200 Gb/s										
TIMESTAMP	SYNCHRONOUS TIMESTAMP (IEEE802.1AS) FOR ALL BUSES & GRAND MASTER										
PROTOCOLS	IEEE 802.1AS PTP, PLP, AUTOSAR-DLT, SOME/IP, XCP OVER TCP, IP CAMERA (RTSP/RTP), PCAP, MDF4, ADD'L AVAILABLE UPON REQUEST										
ADDITIONAL FEATURES	SEAMLESS INTEGRATION FOR CAPTURE (CAN FD, FLEXRAY, LVDS, ETHERNET) CASCADES ADDITIONAL DATA LOGGERS (OPTION) PARALLEL STREAMING OF DATA VIA ETHERNET CONFIGURATION VIA WEB INTERFACE IN-VEHICLE GRAPHICAL USER INTERFACE (GUI) 60-64 TB SINGLE SSD ARRAY – CAN SUPPORT 128 TB OR ABOVE										

► **BEST IN CLASS ROOFTOP SENSORS – DIAGNOSTIC TOOL**

Sensors (lidars, cameras, GNS) strategically placed, capturing ground truth data concurrently with vehicle data to facilitate root cause analysis

- Installs in a day
- Weights 70 kg
- 30A peak, 15A average
- Works with data logger
- Precise segmentation across advanced heterogeneous sensors & test vehicle data



► CLOUD BASED – AUTOMATED DIAGNOSTICS

On board and off-board software suite– designed to be easy to operate, cross-platform and scalable.

Elastic cloud computing (infinite scale)

Automatic failure detection

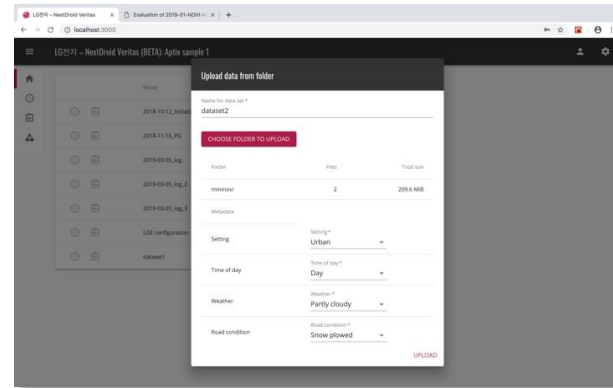
Sensitivity analysis

No on-site software maintenance

[video link to demonstration](#)



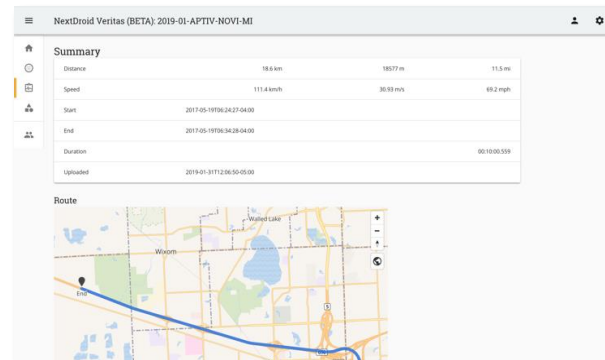
1 AUTOMATED PIPELINE INITIATES AT UPLOAD



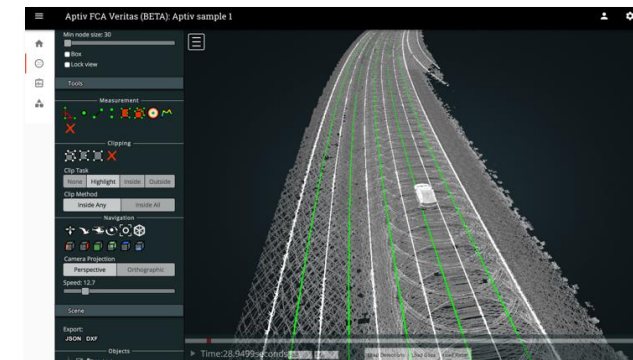
2 PRODUCES AN EASY-TO-READ ANALYSIS



3 COMPLETE OVERVIEW, WITH ISSUE 'FLAGS'



4 RICH GRAPHICAL TOOL FOR FURTHER ANALYSIS

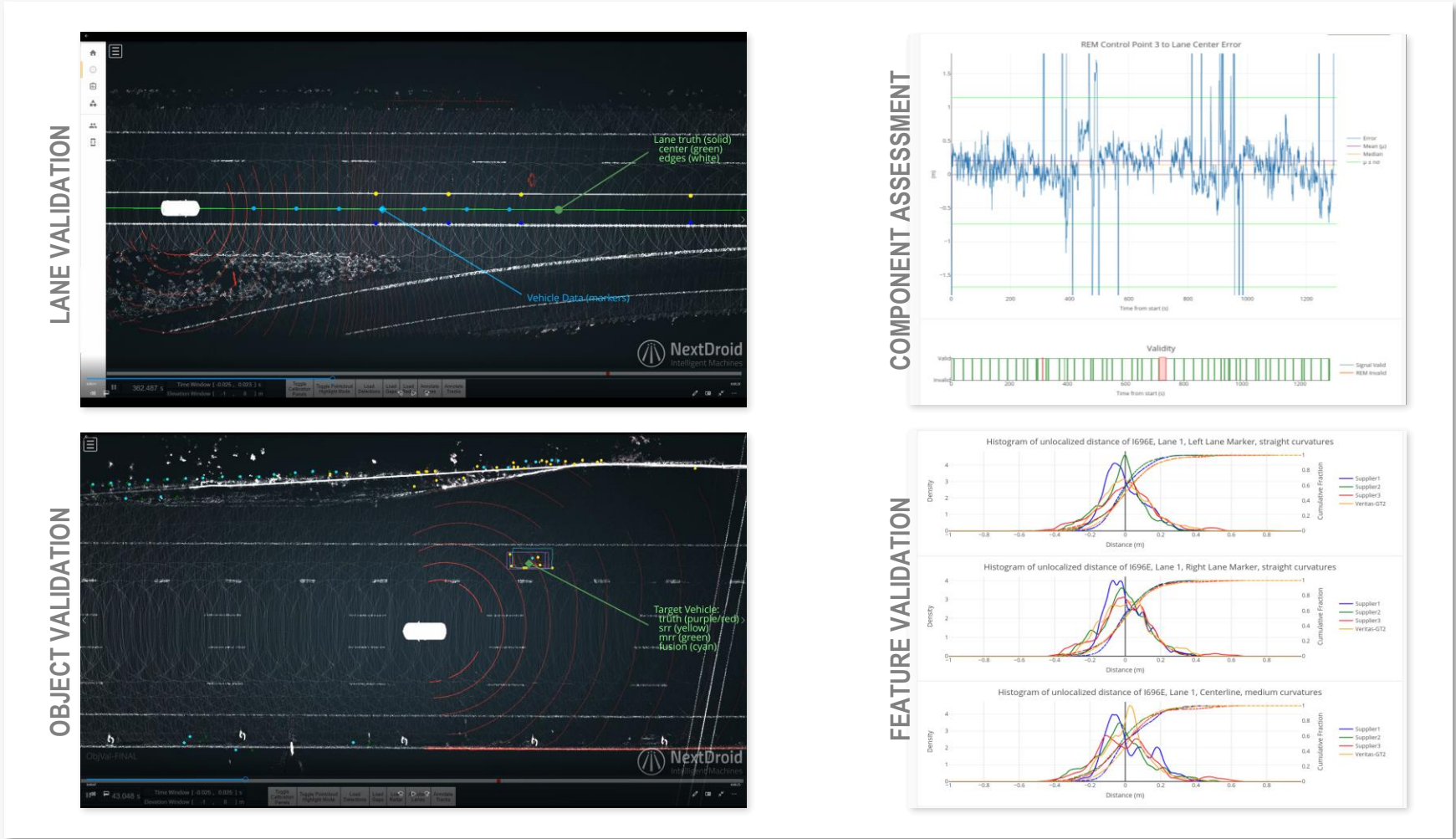


A few use cases, for example Object Positioning, Lane Sensing and Road Model

Continually evolving analysis capability

New capabilities usable on prior data sets

Examples of current capability



Back up (follows)



► **ADAS SOLUTIONS • AND FIVE ERAS OF SAFETY FEATURES (NHSTA)**



CONNECTED CAR

FULL SUITE COVERS HIGHER LEVELS OF ADAS/AV
CAN FUNCTION AS STAND-ALONE PRODUCT



PROVING GROUND USE

SLED, DATA LOGGER, ADD'L HW (IF NEEDED)
AS ABOVE, FAST TURN PROCESSING



MAPPING FUNCTIONALITY

LEADS INTO LOCATION SERVICES



PART OF DEMO/SERVICE OPERATION

IN CONJUNCTION WITH TESTING SERVICES PARTNER



FEATURE DEVELOPMENT

STANDARD SLED, DATA LOGGER, PROCESSING TOOLS
ADDED CLOSE-IN PUCKS
ROBUST IN GPS COMPROMISED LOCATIONS

1950 - 2000

SAFETY/CONVENIENCE

CRUISE CONTROL
SEAT BELTS
ANTILOCK BRAKES



2000 - 2010

ADVANCED SAFETY

ELECTRONIC STABILITY CONTROL
BLIND SPOT DETECTION
FORWARD COLLISION WARNING
LANE DEPARTURE WARNING



2010 - 2016

ADVANCED DRIVER ASSIST

REARVIEW VIDEO SYSTEMS
AUTOMATIC EMERGENCY BRAKING
REAR CROSS TRAFFIC ALERT
LANE CENTERING ASSIST



2016 - 2025

PARTIALLY AUTOMATED

LANE KEEPING ASSIST
ADAPTIVE CRUISE CONTROL
TRAFFIC JAM ASSIST



2025+
FULLY AUTOMATED

AutoMap has built, sold and delivered proprietary technology for driver safety



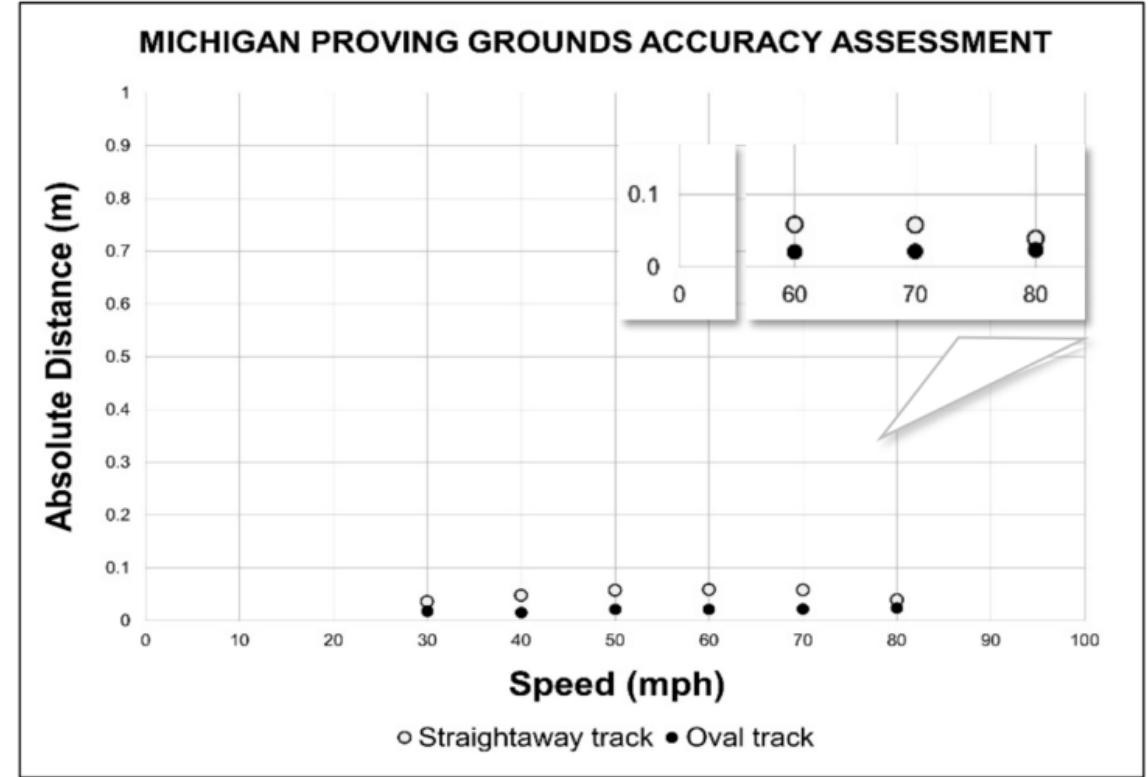
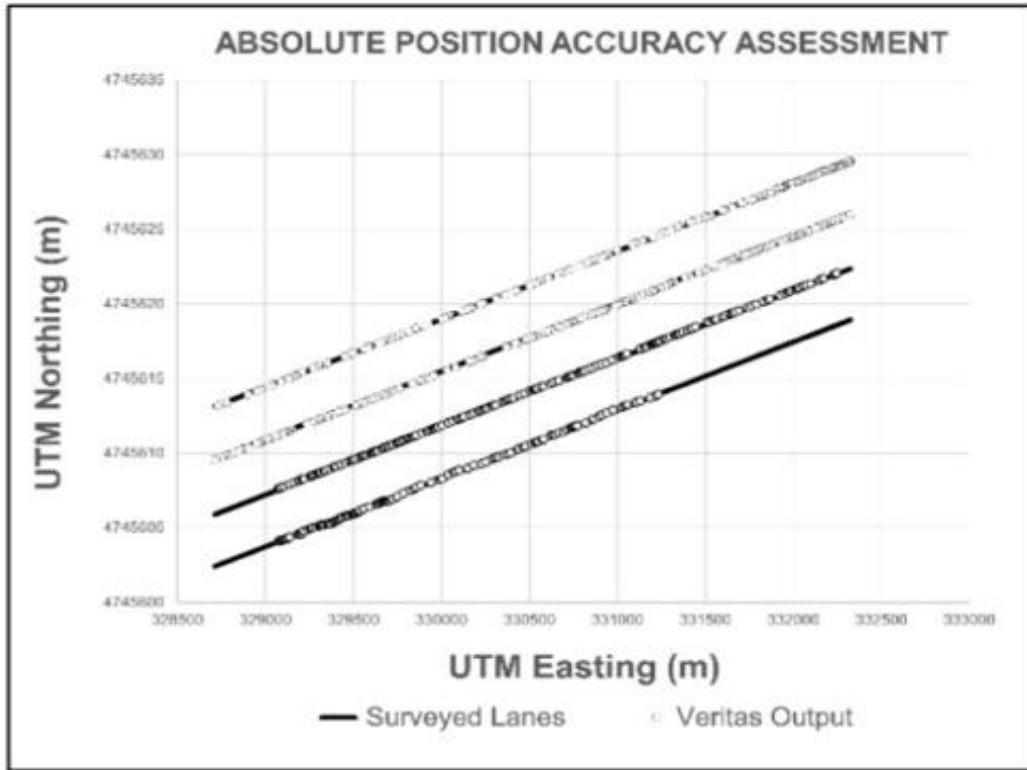
► Multimillion-dollar contracts with leading automakers



► Addressing urgent needs across the entire ecosystem



METROLOGY ACCURACY IS CRITICAL TO ANY PRECISE MEASUREMENT



Average accuracy of 2 cm (here demonstrated in large-scale survey-based OEM study)

