

We aim to be a service and solution provider
that links both technology and intelligence to create higher societal value.

macnica.co.jp

Co.Tomorrowing 

MACNICA, Inc.

Founded: October 30, 1972; Main office location: Macnica Bldg. No.1, 1-6-3 Shin-Yokohama, Kohoku-ku,
Yokohama 222-8561; Capital: 11,194.268 million yen; Employees: 3,499 persons (Current as of March 31, 2021)

macnica

Corporate Guide

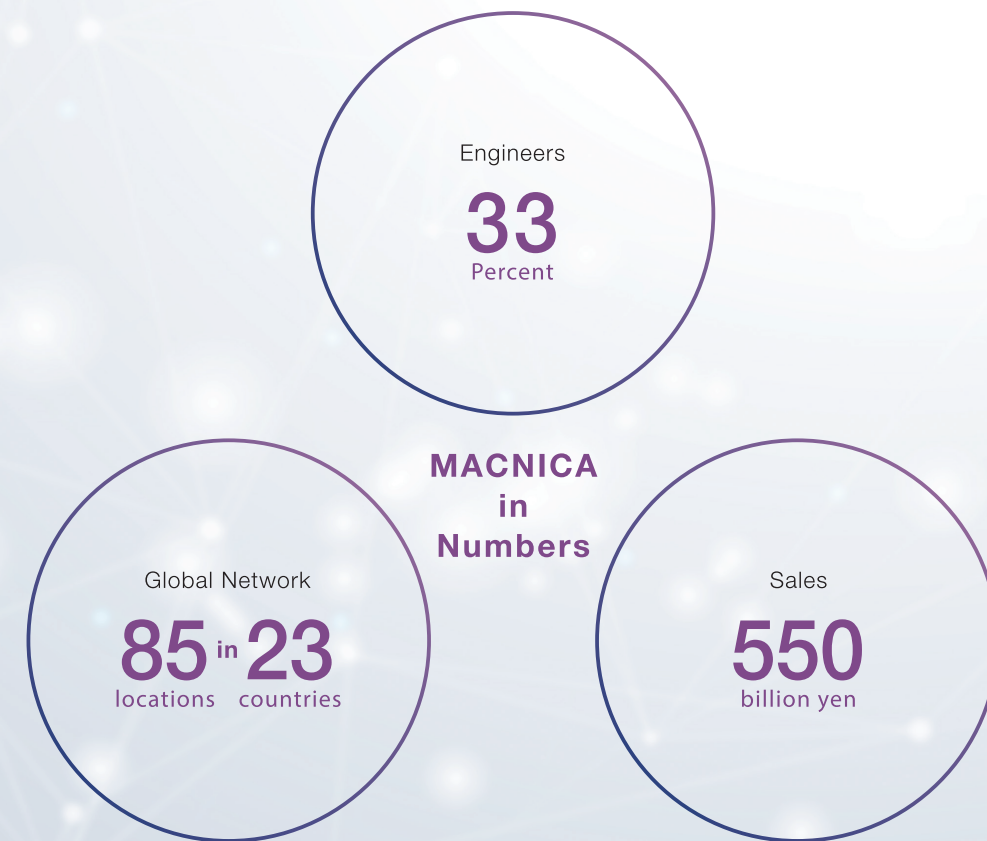
Revel in unfamiliarity and build a richer tomorrow together

We work together with our customers to consider the issues that businesses are facing and come up with the best solutions.

Macnica aims to serve as our customers' trusted guide and partner.

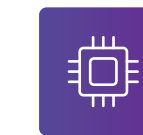
Thrilled by the unknown and embracing our complicated world, Macnica will continue seeking the challenge of a brighter and fuller tomorrow.

By leveraging the knowledge fostered since our company was first founded in 1972, we will stay active in a wide range of diverse fields and provide consistently added value.



Offering the newest in technology for each and every kind of business.

Macnica Inc. provides a broad range of solutions to resolve customer issues based on our technical planning prowess and our sourcing capability for cutting edge technology on a global scale.



SEMICONDUCTORS

With one of the largest portfolios in Japan, we provide a wide range of services, from technical support during product development to methods for the realization of manufacturing ideas.



SECURITY

We protect your business from increasingly sophisticated cyber-attacks by using our front-line technical and information capabilities.



macnica.ai

'macnica.ai' is the business brand name that we use for our AI business. We work with our customers to realize digital innovation by linking technology and experience with domestic and overseas people.



NETWORKS

We offer services for products designed to use the cloud, ranging from implementation to operation and support. We are proud of our proven track record of execution and performance at public agencies.



IoT SECURITY

We offer vital support for IoT device operation while taking all security risks into account, starting from the edge device design stage.



CONNECTIVITY

We provide truly optimal 'linked' technologies based on our knowledge of sensor technology and our experience in manufacturing support.



SMART FACTORY

We work closely with our customers to address their business issues as we digitize their manufacturing and craftsmanship worksites. We support business innovation by working along with the customer to draw up a unified grand design.



MOBILITY SOLUTIONS

Providing automated driving demonstrations and development support by integrating hardware, software, and AI technology.



SERVICE ROBOTS

We provide robots that help make daily lives easier with an eye to a future of cooperation and interaction between people and robots.



HEALTHCARE

Providing medical care solutions to support our rapidly aging society through the application of technology.



ENERGY

We provide decarbonization solutions, energy-saving products, EMS, and other services to help realize sustainable societies.



DX

We can help companies turn their business challenges into business opportunities by analyzing unstructured and system data.



CONSULTING

We offer comprehensive consulting services for DX implementation, including hardware provision, system construction, effectiveness verification, and actual operation.

Providing cutting edge knowledge via an organization of specialists.



ARIH AI Research & Innovation Hub

We offer the knowledge gained by combining the most appropriate AI technologies that emerge from the most advanced AI research, studies, and testing implementations. Our AI experts will guide you to the best solutions for your corporate needs.



SECURITY RESEARCH CENTER

Our IoT security division operates as a research institute completely independent of our business operations. We have partnered with some of the world's leading security companies to research past attacks that have targeted Japan and provide our customers with the most up-to-date information.